

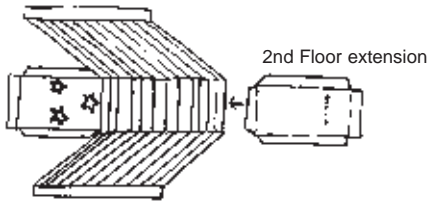
Building your Z-house

2nd floor

1. Go to page 2 ~ the 2nd floor.
2. Color
3. Cut along all - - - - broken lines
4. Follow these steps to assemble the 2nd floor:.

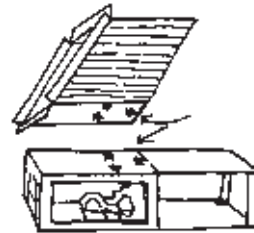
Find "2nd floor roof" and "2nd floor extension" on page 5.

1.



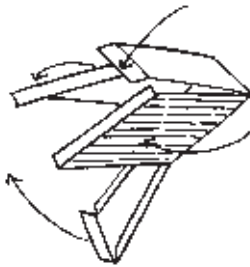
Glue "2nd Floor extension" to the pattern piece.

3.



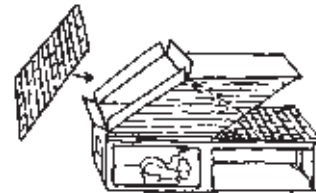
Match the stars and glue 2nd Floor to 1st Floor as shown.

2.



Fold along all fold lines, glue tabs to inside of 2nd Floor. Leave "Roof" tabs free.

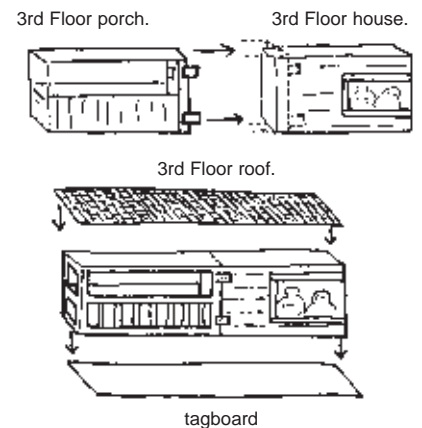
4.



Flatten "Roof tabs" to provide a good surface then glue 2nd Floor Roof in place.

3rd Floor

1. The 3rd floor is in two parts: "3rd floor house" (on page 3) and "3rd floor porch" (on page 4).
2. Color
3. Cut along all - - - - broken lines
4. Fold along all "fold" lines.
5. Glue or tape "3rd floor house" to create 4 walls.
6. Glue or tape "3rd floor porch" to create 3 sides. Overlap porch on house and glue as shown above right.
7. Glue combined 3rd floor to 2nd tagboard piece
8. Glue 3rd floor roof (on page 4) to combined 3rd floor.
9. Follow "Porch Support" directions on page 5 to add the final step to your Z-house.



★ ★ ★ ★ ★ ★ ★
WOW! Congratulations!
You did it!

You not only built your own Z-house but you learned about making models: glue tabs, fold lines, process etc. Now you can create models of your own.